



**HIKVISION**

## HIKVISION ITS Proposal

First Choice for Security Professionals



**NHÀ AN TOÀN**  
Leading security solutions

- General Introduction
- Trends of ITS Development
- Main System Components
- Future of ITS

- ❖ HD Vehicle Image
- ❖ License Plate Number
- ❖ Seat Belt

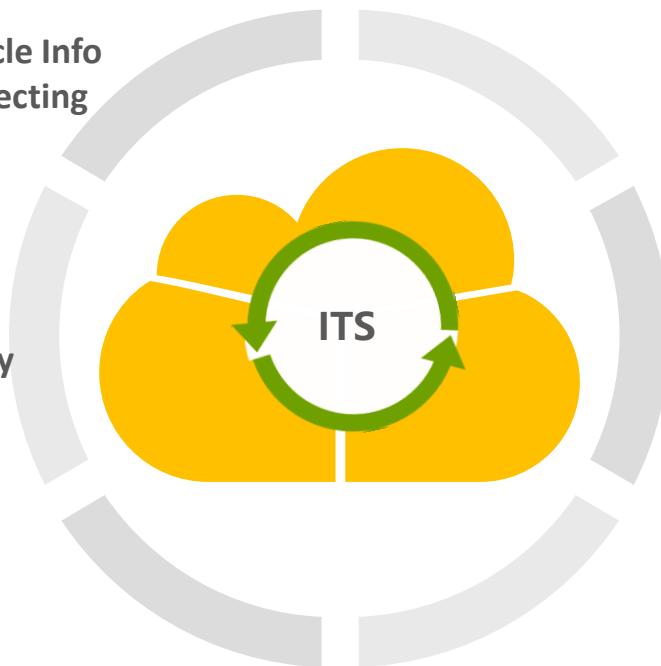
## Vehicle Info Collecting

## Offsite Penalty

- ❖ Red Light Violation
- ❖ Driving Direction Violation
- ❖ Lane Crossing Violation
- ❖ Illegal Parking
- ❖ Speeding

## Traffic Diagnose

- ❖ Jam Road Diagnose
- ❖ Short-term Flow Prediction





### 3 Main Characters in Traffic

HIKVISION

## Human

Main character in traffic activities



## Vehicle

Carriers



## Road

Facilities

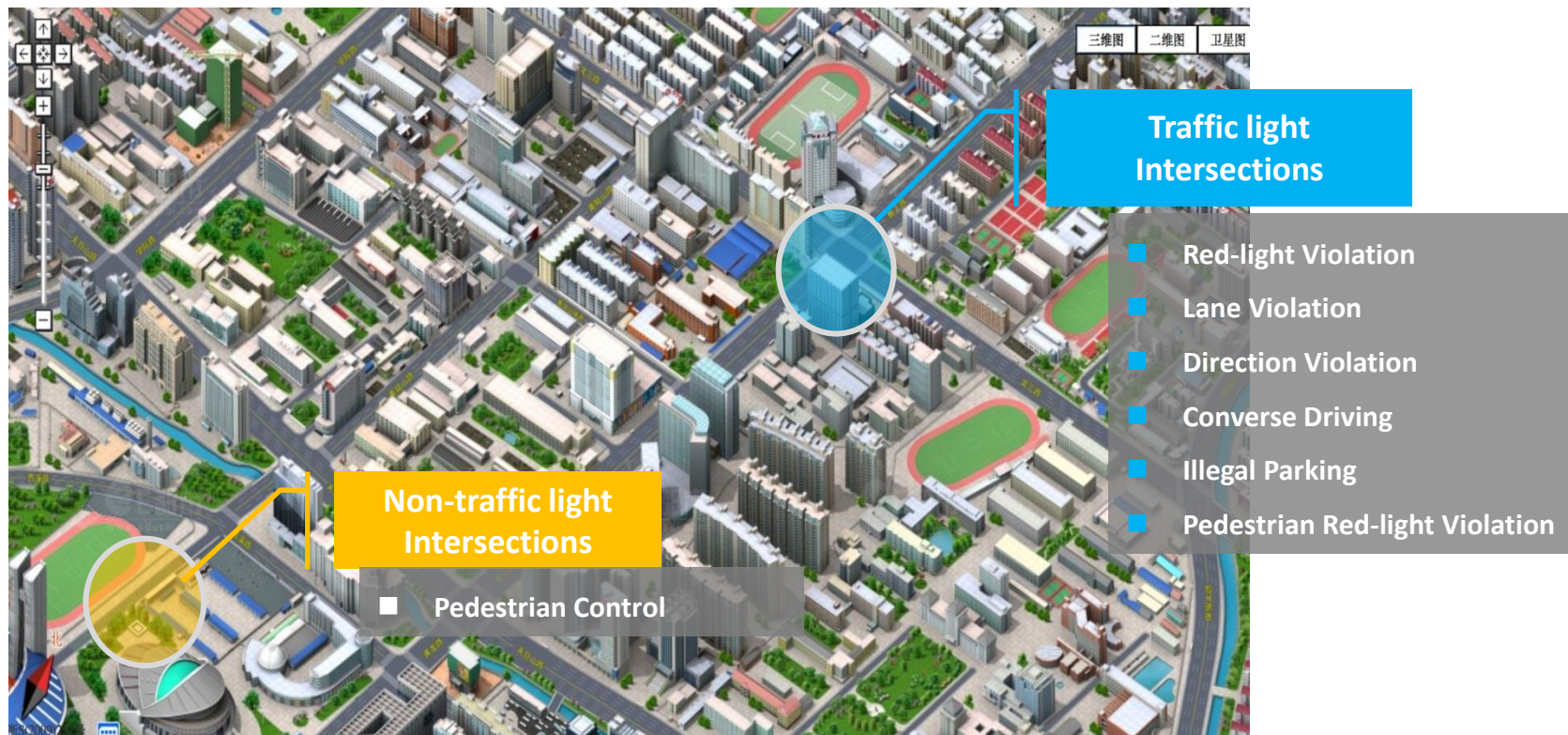


First Choice for Security Professionals

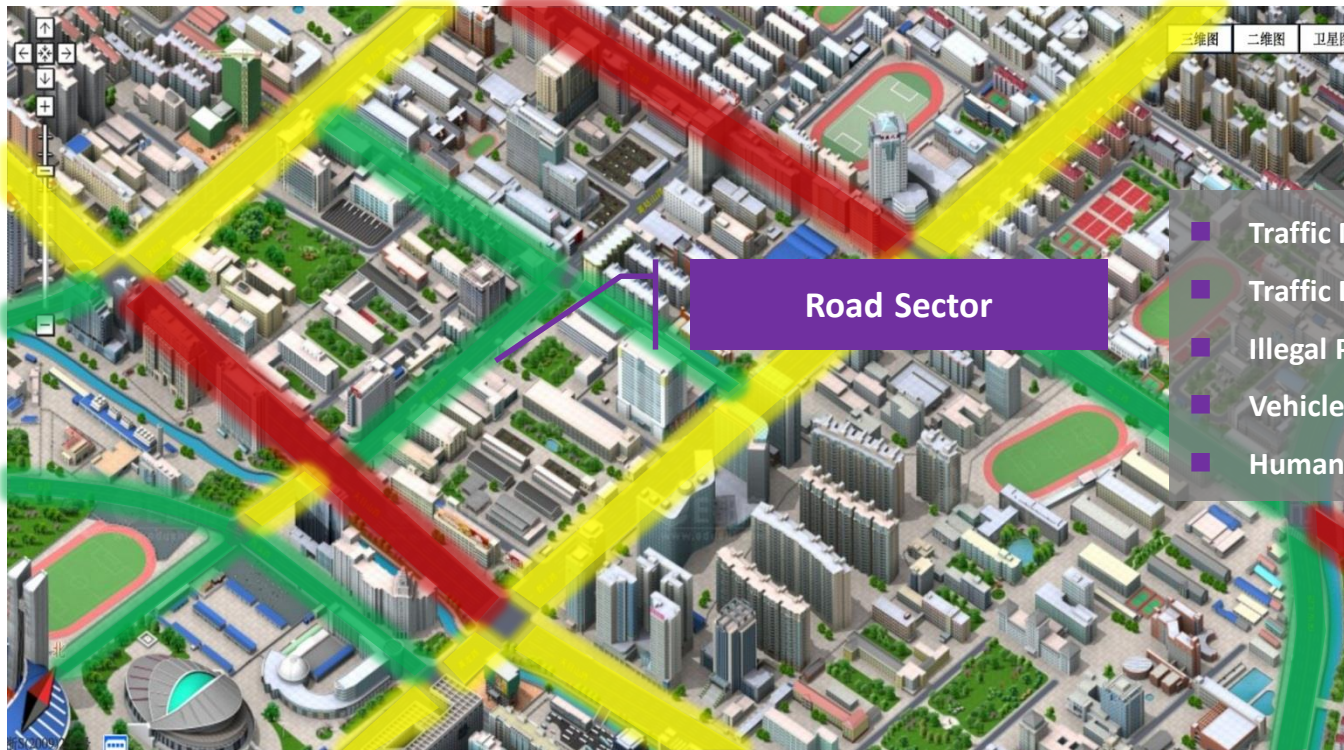


**NHÀ AN TOÀN**  
Leading security solutions

## Point——Intersections, Bus stops



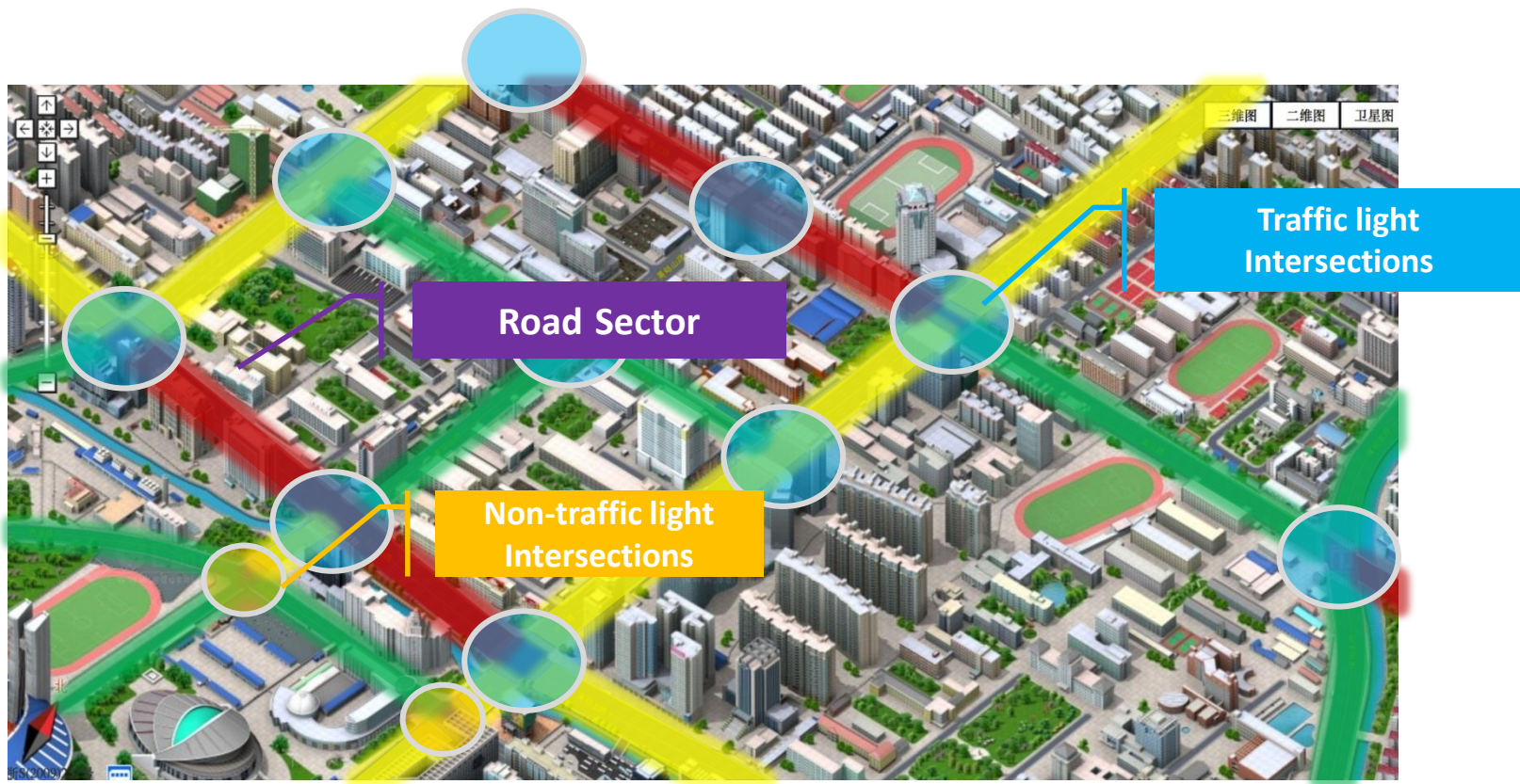




- Traffic Monitoring
- Traffic Data Collecting
- Illegal Parking
- Vehicle Info Collecting
- Human & Event Monitoring

## Area——Network of Road

HIKVISION

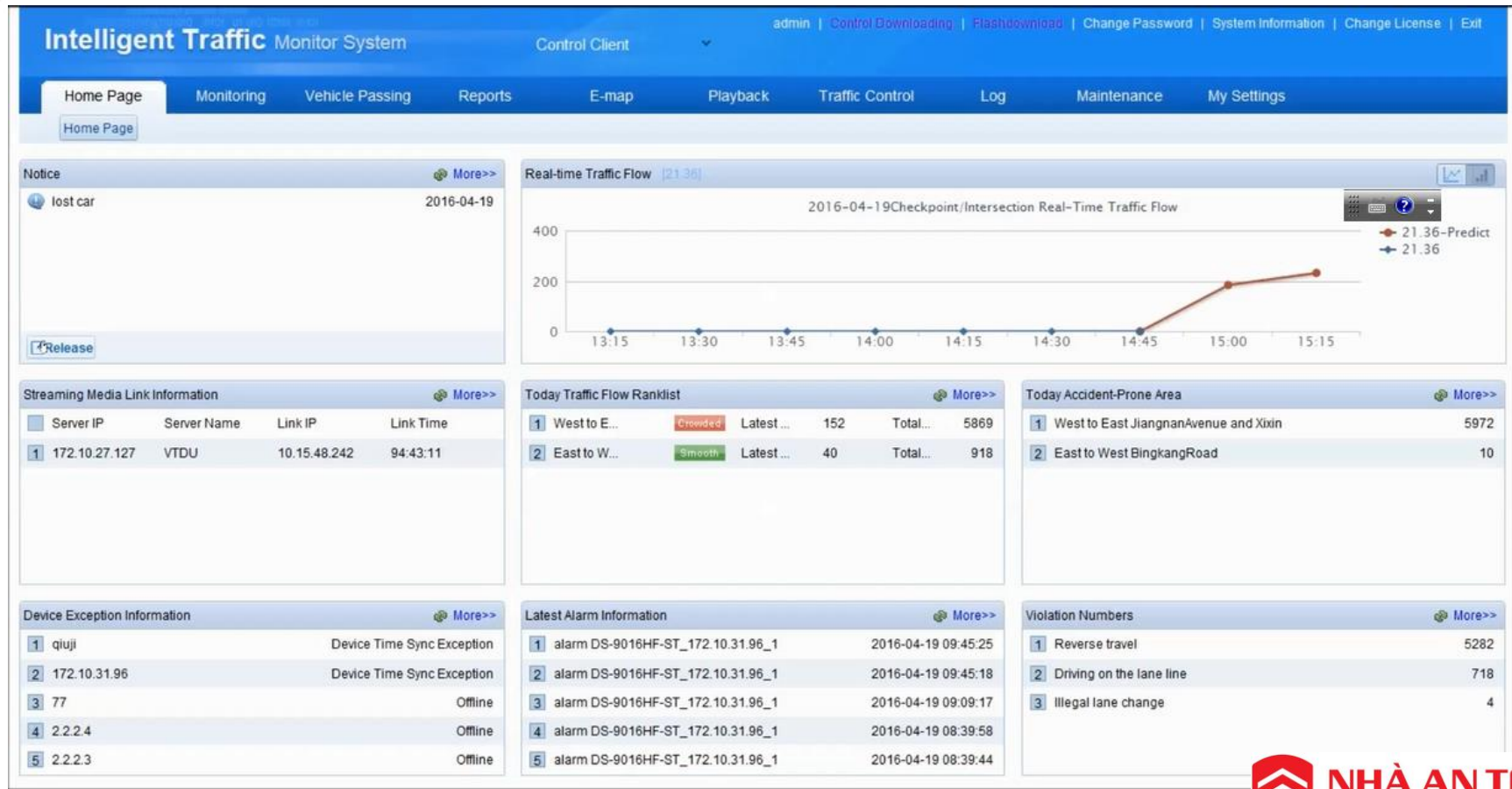


First Choice for Security Professionals



**NHÀ AN TOÀN**  
Leading security solutions







# One-Stop Traffic Command & Control



## E - Police





# Penalty Income

In China, taking **1,000-Lane** project for estimation, Modeling by **2000** vehicle passing per day, we assume that there is **1%** red-light violation, and for each the penalty is **200 CNY**, the daily Penalty Income is **4 million CNY** and it takes **25 days** to retrieve the deployment cost of E-Police.





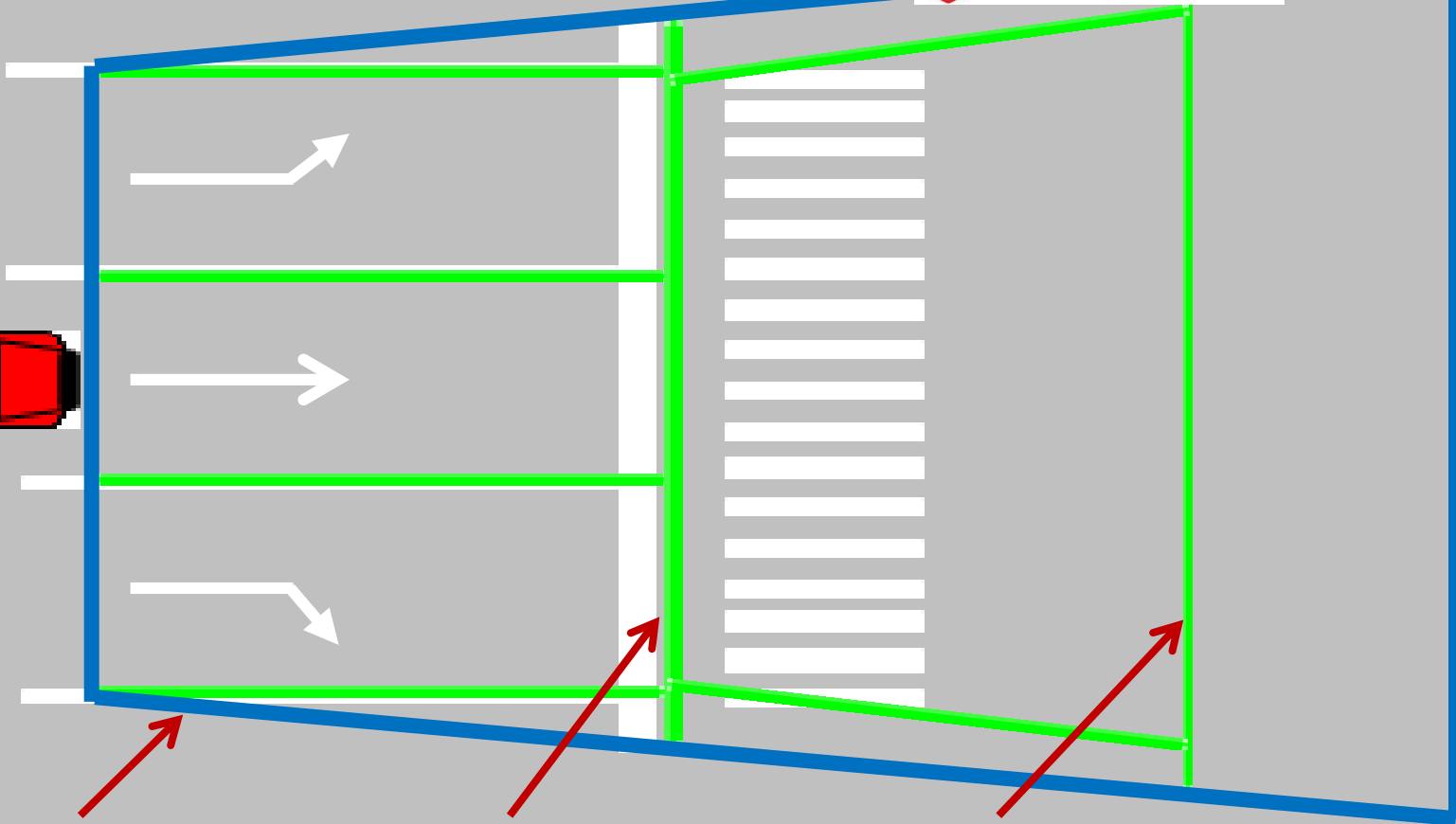
**Running Red Light**

**Line-pressing**

**Retrograde**

**Wrong Lane**





**Detect Zone**

**Trigger Line 01**

**Trigger Line 02**



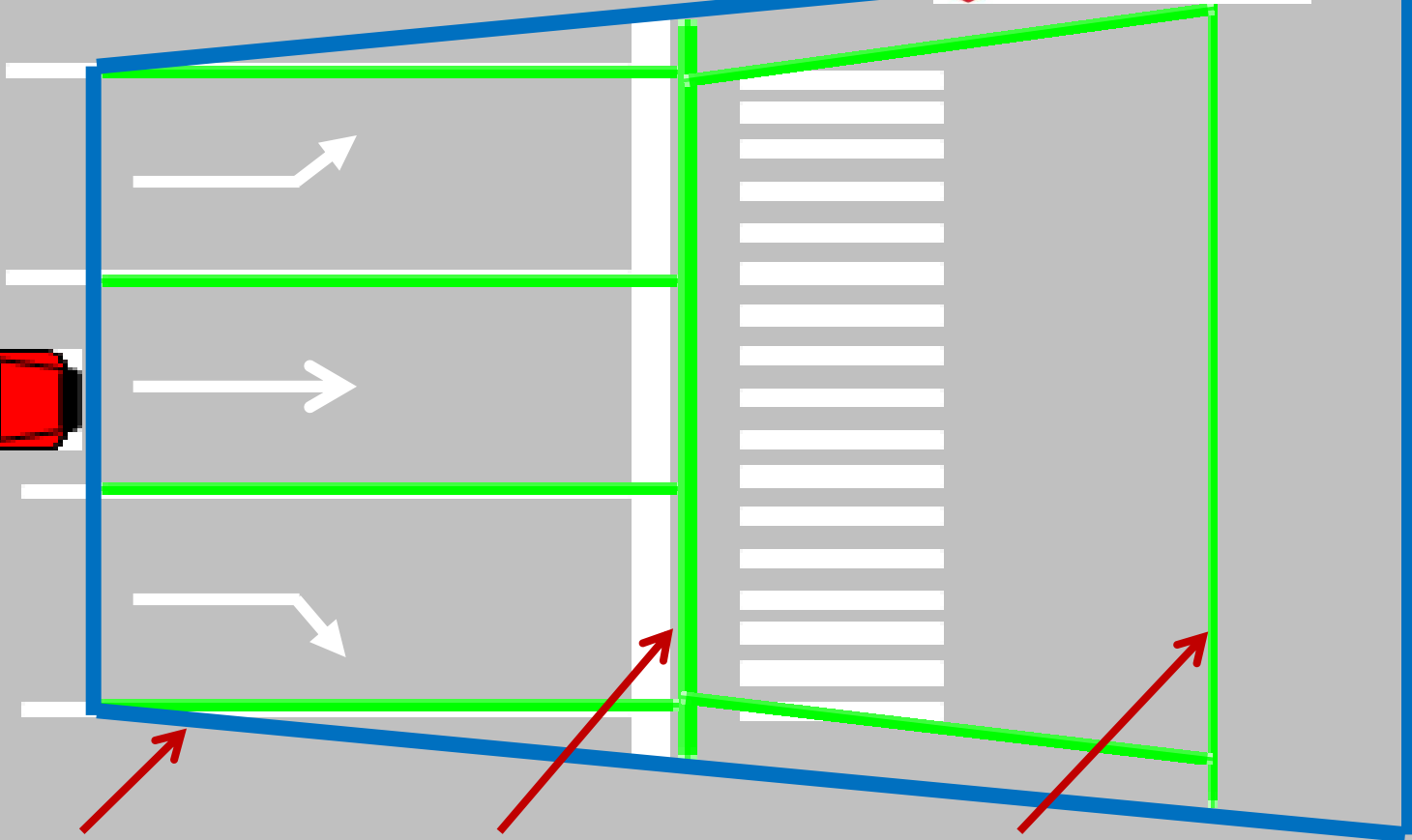
**Running Red Light**

**Line-pressing**

**Retrograde**

**Wrong Lane**





**Detect Zone**

**Trigger Line 01**

**Trigger Line 02**



**Running Red Light**

**Line-pressing**

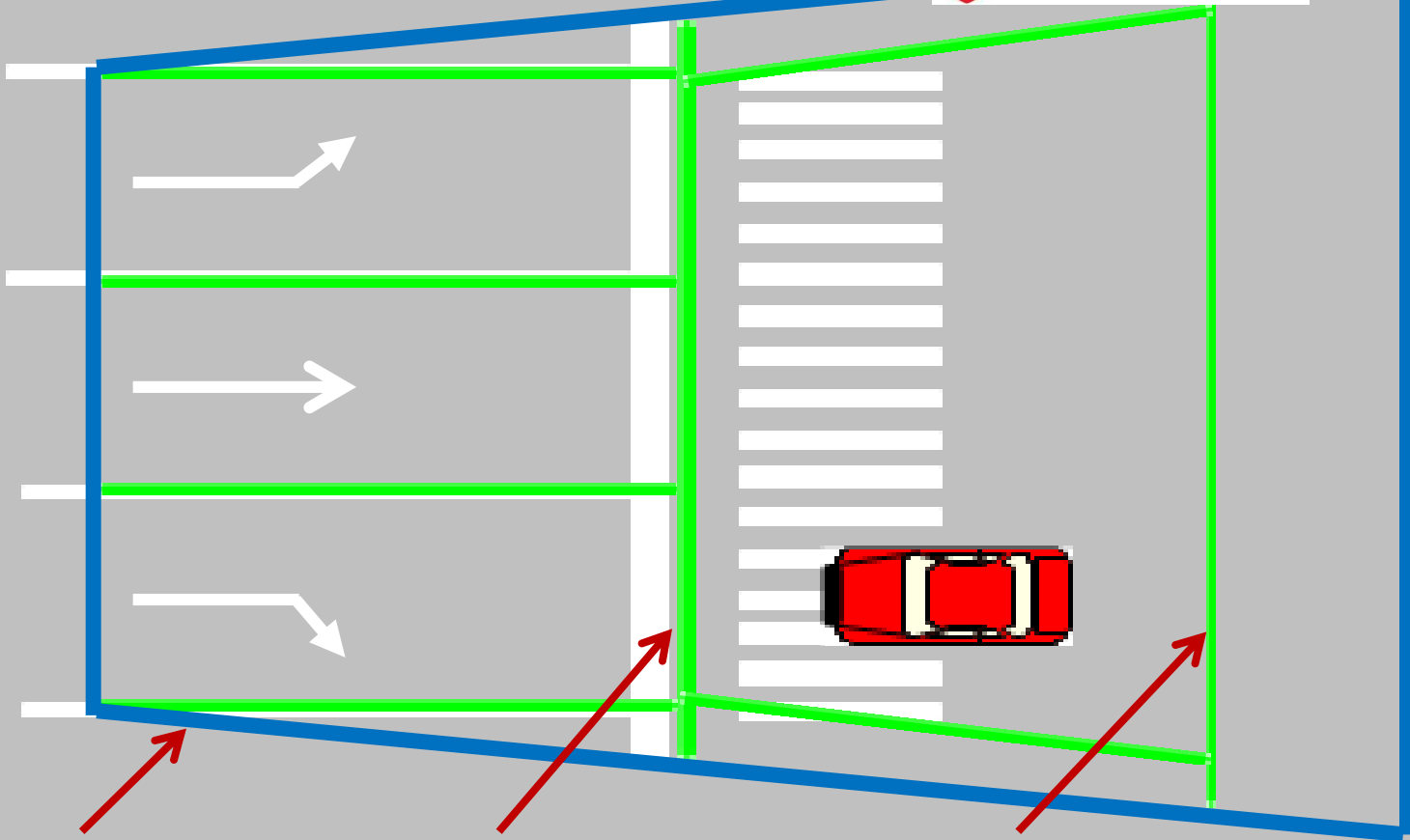
**Retrograde**

**Wrong Lane**

**Detect Zone**

**Trigger Line 01**

**Trigger Line 02**





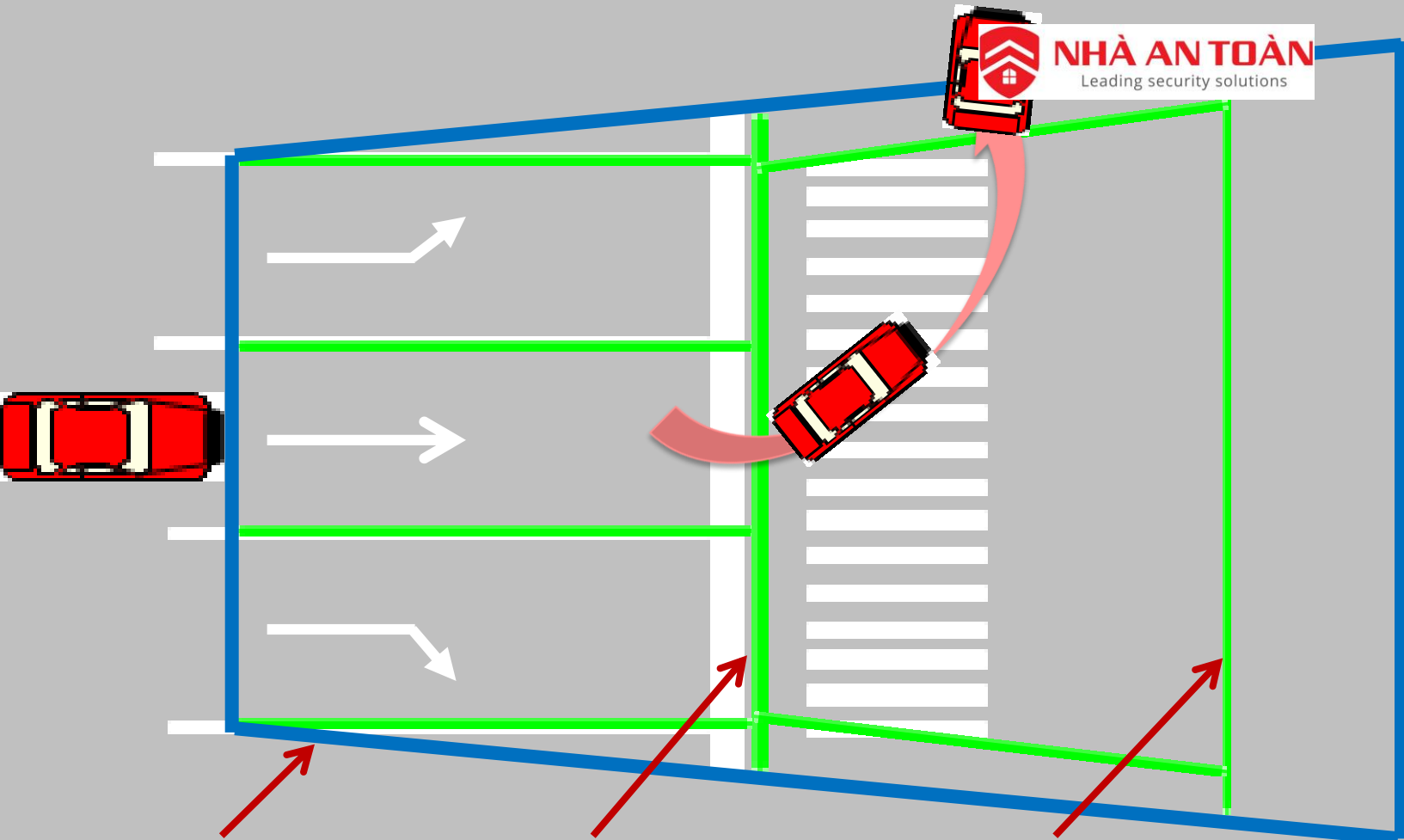


**Running Red Light**

**Line-pressing**

**Retrograde**

**Wrong Lane**



**Detect Zone**

**Trigger Line 01**

**Trigger Line 02**

# Field Shot of 2.0 Megapixel Camera



**NHÀ AN TOÀN**  
Leading security solutions

**HIKVISION**



电警17 车道000004 2010-12-01 11:38:22:883



2010年12月01日11:38:22 车速=000km/h 车道:04东方路东环路口由北向南



2010年12月01日11:38:23 车速=017km/h 车道:04东方路东环路口由北向南



2010年12月01日11:38:24 车速=017km/h 车道:04东方路东环路口由北向南



# Field Shot of 2.0 Megapixel Camera



**NHÀ AN TOÀN**  
Leading security solutions

**HIKVISION**



电警03 车道000002 2010-12-02 02:30:46:820



2010年12月02日02:30:46 车速:000km/h 车道:02舞潮路东方路口由东向西



2010年12月02日02:30:47 车速:000km/h 车道:02舞潮路东方路口由东向西



2010年12月02日02:30:47 车速:022km/h 车道:02舞潮路东方路口由东向西

## Traffic Bayonet

First Choice for Security Professionals



# Traffic Bayonet



LPR

Speed Inspection

Forensic Capture

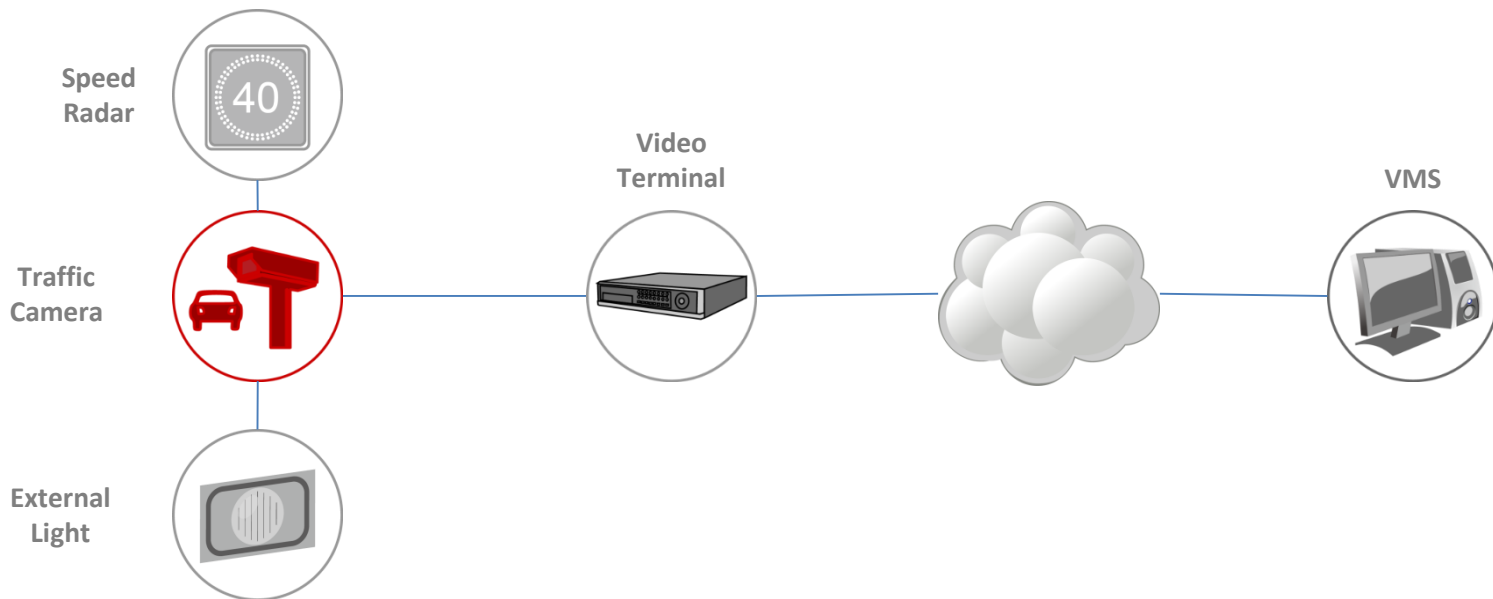
Vehicle Information Analysis



First Choice for Security Professionals



# Traffic Bayonet Deployment



# Snapshot Examples



Night



Day

3MP Capture Unit with Radar for 2-lane Road

# Snapshot Examples



Night



Day

7MP Capture Unit with Radar for 3-lane Road



# Road Monitoring

First Choice for Security Professionals



**NHÀ AN TOÀN**  
Leading security solutions

**HIKVISION**



## Road Monitoring in Control Center



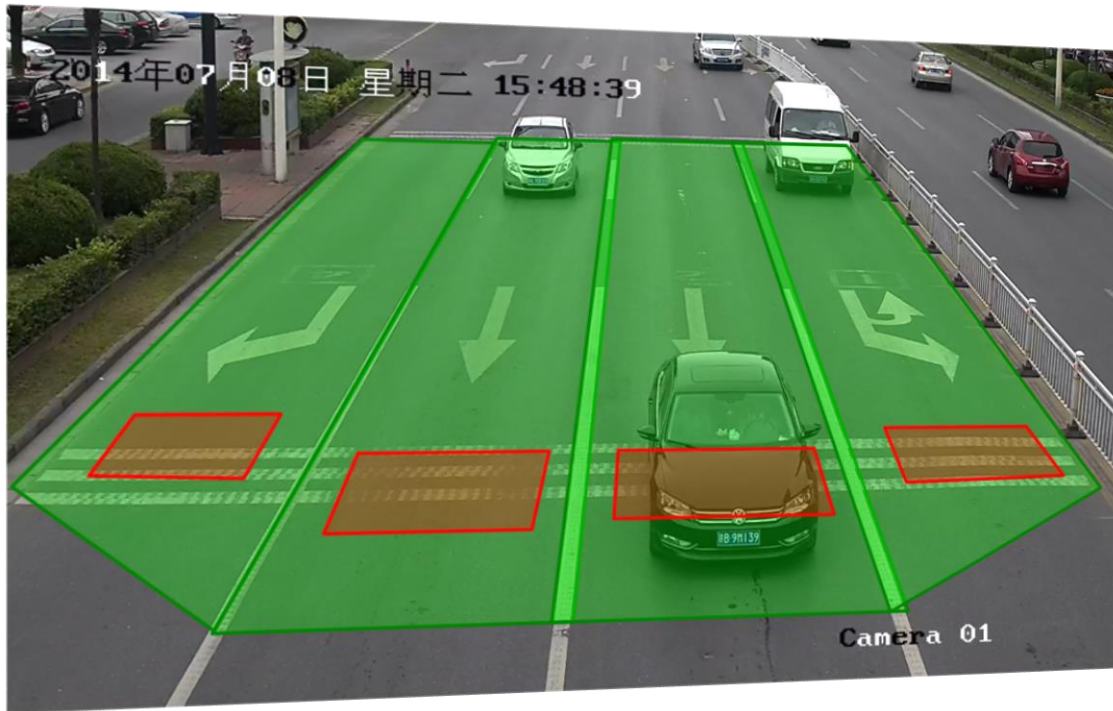
- Central Monitoring
- Incident Action
- Police Force Dispatching
- Event Investigation



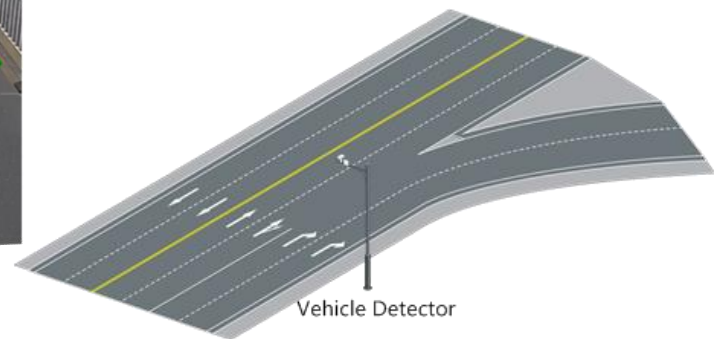
# Traffic Dismission



## Vehicle & Volume Detector



- Traffic Volume
- Lane Occupation
- Vehicle-vehicle Distance
- Average Speed



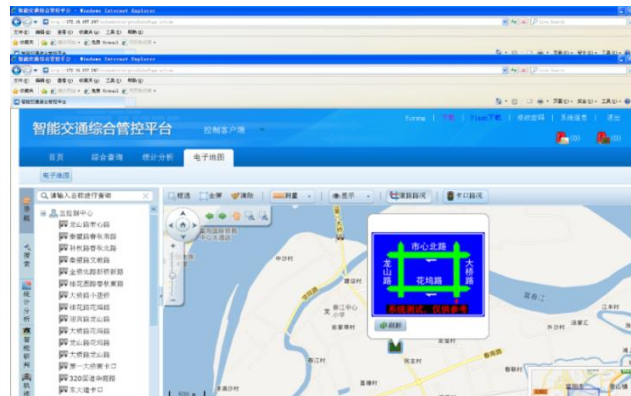


# Traffic Guidance Applications



## 实时道路状况

- 1 大桥路 (市中心->花坞路)
- 2 花坞路 (龙山路->大桥路)
- 3 龙山路 (市中心->迎宾路)
- 4 龙山路 (花坞路->市中心)
- 5 龙山路 (花坞路->大桥路)
- 6 龙山路 (迎宾路->市中心)
- 7 龙山路 (市中心->花坞路)



## Illegal Parking





10-15-2015 星期四 11:20

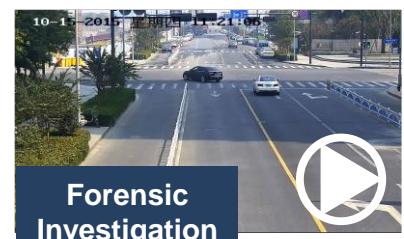
10-15-2015 星期四 11:20



>240m



Long Distance



Forensic Investigation





## Illegal Parking --- Forensic Capture



**NHÀ AN TOÀN**  
Leading security solutions

**HIKVISION**



监控点编号:1 方向:路北/上行 22-04-2014 12:50:46.650 车牌号:蓝牌B0F038 监控点信息:朝阳路学院路口 违法行  
为:城市道路违法停车-1



监控点编号:1 方向:路北/上行 22-04-2014 12:51:46.650 车牌号:蓝牌B0F038 监控点信息:朝阳路学院路口 违法行  
为:城市道路违法停车-2



监控点编号:1 方向:路北/上行 22-04-2014 12:52:53.030 车牌号:蓝牌B0F038 监控点信息:朝阳路学院路口 违法行  
为:城市道路违法停车-1



监控点编号:1 方向:路北/上行 22-04-2014 12:53:52.690 车牌号:蓝牌B0F038 监控点信息:朝阳路学院路口 违法行  
为:城市道路违法停车-2



## Extension of Applications

Road  
Construction Plan

Information  
Dismissing

Big Data Analysis

Jam & incident  
Management

Traffic Guidance

Road Monitoring

# Thanks

**Hikvision Digital Technology Co., Ltd.**

No.555 Qianmo Road, Binjiang District

Hangzhou 310052, China

T +86 571 88075998

F +86 571 89935635

overseasbusiness@hikvision.com

**[www.hikvision.com](http://www.hikvision.com)**